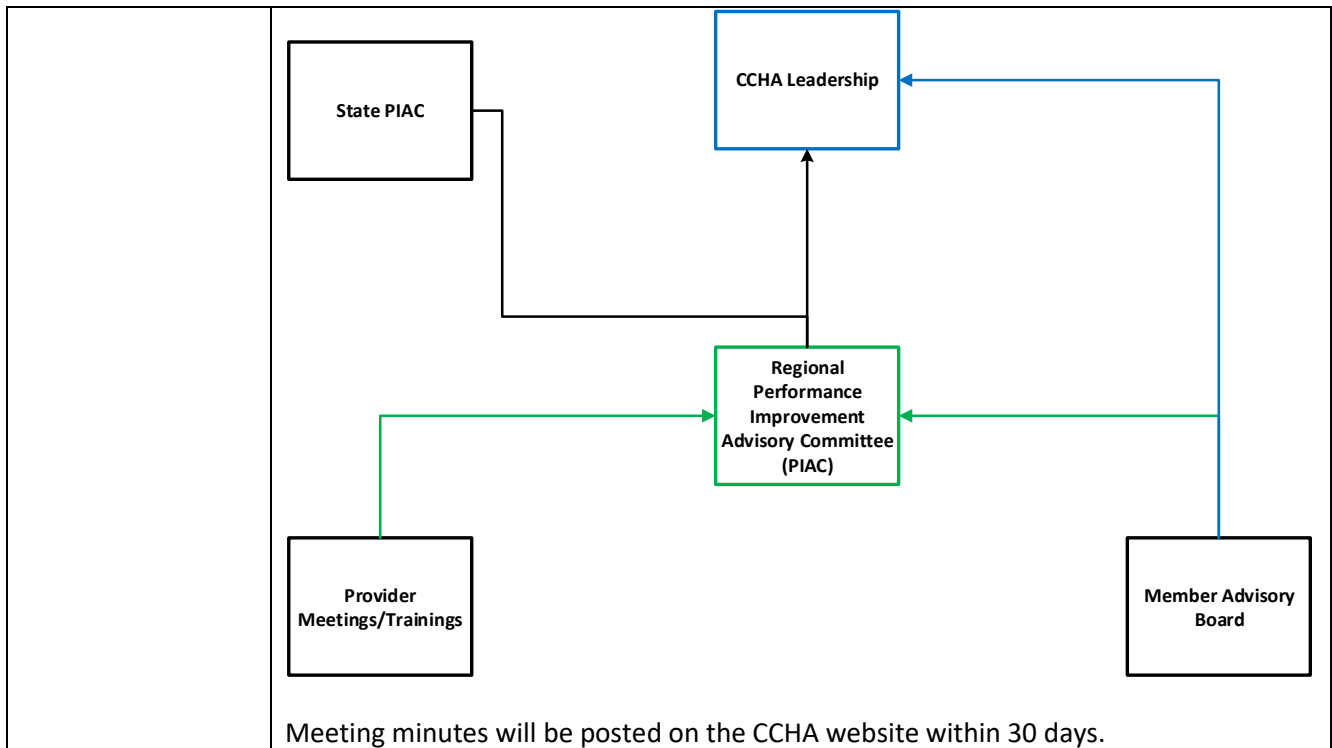


Regional Program Improvement Advisory Committee Charter, Region 7

Committee Details	
Purpose and Goals	<p>Vision: A health care delivery system that improves member health outcomes and reduces cost.</p> <p>Mission: To convene a diverse, multi-disciplinary network of health care providers, community organizations, and other service providers that serve Health First Colorado (Colorado’s Medicaid Program) members to provide feedback on processes and systems to improve health, access, cost, and satisfaction of members and providers.</p> <p>Purpose:</p> <ol style="list-style-type: none"> 1. Engage and strengthen the health neighborhood and community in Region 7 of the Accountable Care Collaborative (ACC), which includes: El Paso, Park and Teller counties. 2. Provide a forum to give feedback about Colorado Community Health Alliance’s (CCHA) processes and systems. 3. Create a health neighborhood and community leadership network within the region. 4. Advise on strategies for reinvesting CCHA incentive funds to support and strengthen the Health Neighborhood and Community. <p>Objectives and Focus Areas:</p> <ol style="list-style-type: none"> 1. Solicit strategic and tactical input on CCHA processes and systems. 2. Create aligned goals and outcomes across the health neighborhood and community. 3. Review deliverables and performance data to identify opportunities for improvement. 4. Present new initiatives implemented within CCHA. 5. Discuss program policy changes and provide feedback. 6. Review member outreach materials. 7. Identify barriers to participation in Health First Colorado. 8. Collaborate to design and implement approaches to address barriers. 9. Share information from CCHA Provider Meetings, Member Advisory Council, and State Program Improvement Advisory Committee.
Scope	To provide stakeholder oversight of the Regional Accountable Entity (RAE) for Region 7.
Responsibilities and Expectations	To convene a diverse, multi-disciplinary network of health care providers, community organizations, and other service providers that serve Health First Colorado (Colorado’s Medicaid Program) members to provide feedback on processes and systems to improve health, access, cost, and satisfaction of members and providers.

Membership Composition	<p>Committee Membership: CCHA values the diverse expertise of the health neighborhood and community. CCHA will collaborate with community partners to ensure all groups are represented on the committee. Membership characteristics of this committee will include:</p> <ul style="list-style-type: none"> • Health First Colorado members and advocates, representing members across life-stages and health conditions • Primary Care providers, including: federally-qualified health centers, independent community clinicians, rural health centers • Behavioral Health providers, including: community mental health centers, substance use disorder providers, independent community clinicians • Representatives of hospitals and specialty care • Representatives of oral health • Representatives of long-term services and supports <p>Membership Structure: The PIAC committee will have voting members. CCHA will ensure a variety of community partners and providers are selected to be voting members.</p>
Membership Terms	<p>The voting members will serve a term of a minimum of one year to ensure consistency.</p>
Voting Rules	<p>Voting Member Expectations:</p> <ul style="list-style-type: none"> • Assume a fiduciary duty to the system and to peers; committee membership does not represent an opportunity to advocate or pursue private agendas • Exhibit respect for all individuals involved, directly or indirectly, in the process • Attend regularly; a proxy assigned will not be allowed to vote • Actively prepare for and participate in meetings • Serve as an information conduit to and from peers • Champion projects and initiatives approved by the committee • Openly discuss opinions during meetings but rally behind the final decision
Reporting Structure & Requirements	<p>The reporting structure is designed to ensure consistency and communication flow between other forums and meetings, which include CCHA Provider Meetings, the CCHA Member Advisory Council (MAC) and the State Program Improvement Advisory Committee (PIAC). A representative from the MAC will be a voting member on the Regional PIAC to share information across committees and increase alignment. The Regional PIAC will report to CCHA’s leadership to ensure the feedback and ideas voiced in the meetings are communicated back to all leadership personnel. In addition, a representative from the Regional PIAC will participate in the State PIAC to share information between both forums.</p> <p>See flow chart below for the outlined committee reporting structure:</p>



Meeting Logistics	
Frequency	Quarterly
Time	
Duration	1.5 hours
Location	The meeting will take place at a central location within Region 7. Reasonable accommodations will be provided upon request for persons with disabilities.
Meeting Chair	A CCHA staff member in a key personnel position, defined in the RAE contract, will be the meeting chair.

Date Approved	3/5/2019
Review Date(s)	5/12/2020